



METALCLOAK

INSTALLATION INSTRUCTIONS

PRODUCT: REAR FENDERS AND FLARES

REV: D | 05-12-2011 | II-2410

**READ INSTRUCTIONS IN FULL BEFORE INSTALLATION.
QUESTIONS? CALL 916-631-8071 M-F 8:00 AM – 5:00 PM PST**

The MetalCloak experience includes the ease of installation of our products. We design for most contingencies, but installation may be different based on different Jeep condition, configuration and/or year.

We are continually trying to improve our products and instructions – please help us by providing feedback and pictures if you find any part of the instructions that do not match your particular Jeep or are not easily understandable.

If you have any difficulties at all, please give us a call. Thank you and enjoy your MetalCloak Products!

IMPORTANT NOTE: We use Stainless Steel Hardware where possible. Therefore, a tube of Silver Anti-seize is provided and should be used on all bolts—only a small amount is needed.

WARRANTY INFORMATION: This article is sold without warranty expressed or implied. No warranty or representation is made as to this products ability to protect the user from injury or death. The user assumes that risk. The effectiveness, warranty and longevity of this equipment are directly related to the manner in which it is INSTALLED, USED and/or MAINTAINED. THE USER ASSUMES ALL RISK. By purchasing this product and opening the packaging, purchasers expressly acknowledge, understand and agree that they take, select and purchase these MetalCloak products from Armored Works, LLC, its affiliates and distributors and agents as is and with all faults. The entire risk as to the quality and performance of these MetalCloak products is with the purchaser. Working on your vehicle can be a dangerous activity. If you are unsure of what you are doing, please leave mechanical or safety critical work to a skilled mechanic. We take no responsibility for the incorrect use and/or installation of MetalCloak products.

Phase 1: Tools & Notes on Installation



Tools Required: This list is the recommended tools for ease of installation. Other versions of the same tool can be used. For example, Allen Wrenches instead of Allen Drive Sockets.



Socket & Ratchet Wrench

5/32" Allen Socket and/or Wrench



9/16" Crescent and/or Box Wrench

Vice Grips



1/8" Drill Bit
3/8" Drill Bit
1/2" Drill Bit

Power Drill



HOW TO USE THIS GUIDE: The installation guide contains ALL steps for installation. Please read and follow the instructions in order of each page top to bottom, and left to right.

Jeep Model: Instructions may apply to multiple Jeep models, but are labeled separately where appropriate (i.e. TJ vs. LJ).

Options: Because of the number of component options we offer, these instructions may contain steps that will not match your particular configuration. You can skip these steps.

Images: Pictures are provided and parts are labeled throughout the instructions. Each text box contains guidance based on the pictures next to it. The text will refer to alphabetical labels (A, B, etc) found in the images.

Installation Notes: Terms may be used in the body of the instructions that you may not be familiar with, if you have any questions feel free to contact us at the number below, or email techhelp@metalcloak.com

QUESTIONS: Any questions or comments about the instructions? Call us at 916-631-8071 M-F 8:00 AM – 5:00 PM PST.

Phase 2: Prepare JEEP for Installation

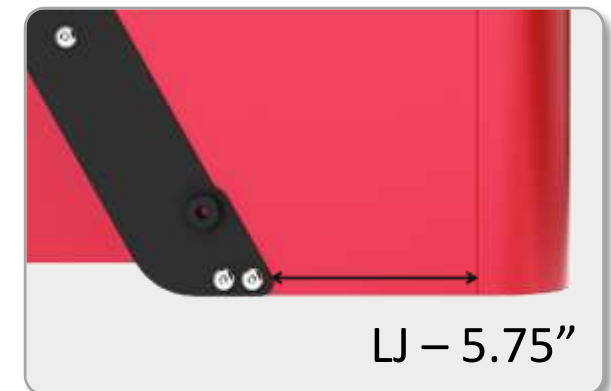
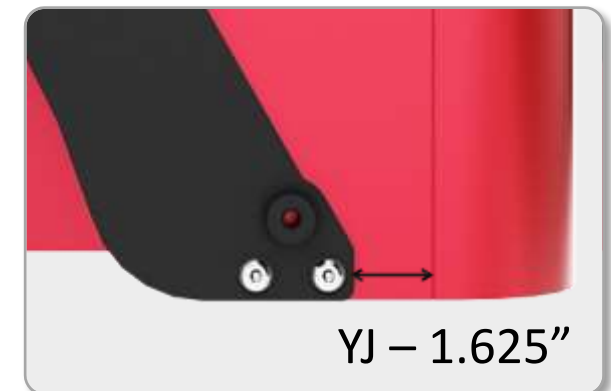
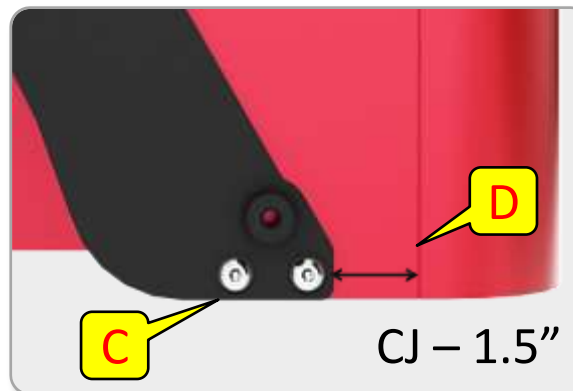
Step 1: Remove Stock Fenders

- A. Remove the stock Inner Fender liner and Flares from your Jeep. *We recommend that you clean all dirt/rust from the tub prior to installation.*
- B. **NOTE:** On some models you may have Rivet Nuts installed in the tub that attach the stock Flare. These need to be drilled out so that the Rear Base Plate will mount flush against the tub.



Step 2: Align and Clamp Base Plate

- C. Align bottom of Base Plate with the lowest part of the tub. **IMPORTANT NOTE:** the bottom lip of the tub is rounded; be sure to align with the lowest point of the tub. Also, ensure the top of the Base Plate is parallel to the top of the tub.
- D. For horizontal alignment, measure from the seam on the rear corner of the tub forward to the furthest rear point of the Base Plate (the different models are shown to the right).
- E. Clamp the Base Plate in place. If your part is already coated, use a rag or similar to protect the coating.



Phase 2: Prepare JEEP for Installation

Step 3: Drill Holes in Jeep Tub

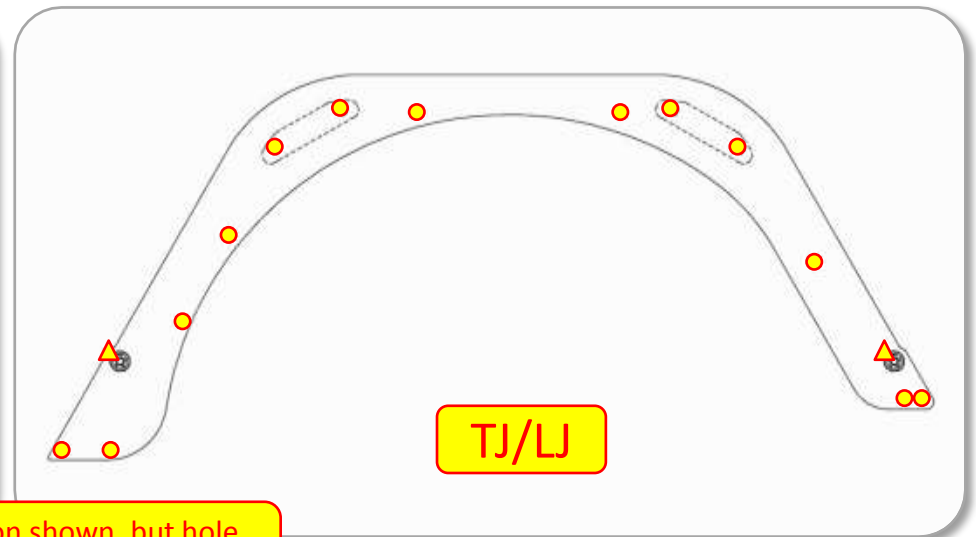
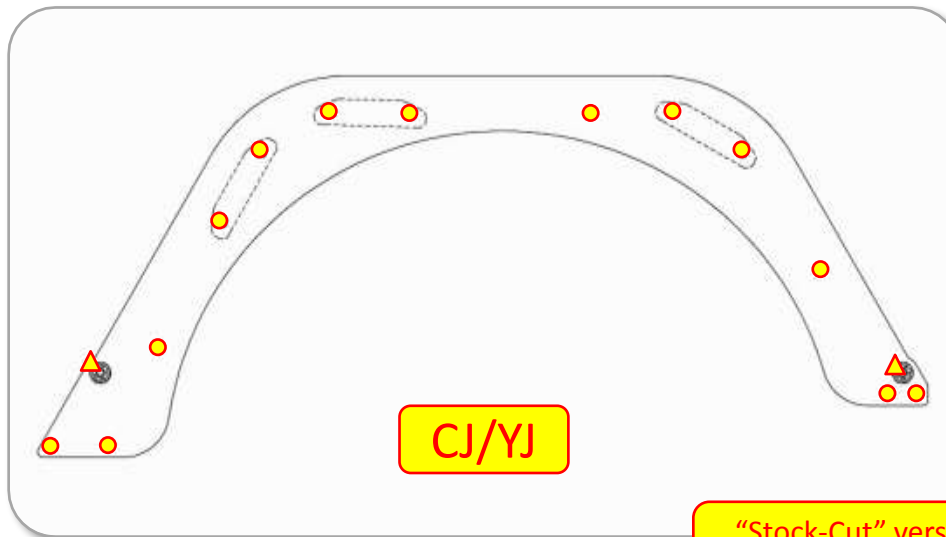
- F. Center punch all holes to be drilled. *NOTE: If your Base Plates are un-coated then the laser-cut holes can be used as a drill guide prior to removal and coating. If your Base Plates are already coated it is highly recommended that you remove them before drilling.*
- G. If you are installing Mod-Cut Base Plates, mark the Mod-Cut profile before removing so you know where to trim (or, again, use un-coated Plates as a template).
- H. Pre-drill all holes with a 1/8" drill to ensure proper alignment. Step up in size to the final drill to maintain alignment and prevent ripping the thin tub metal.



IMPORTANT NOTE! Double check for clearance behind all drill locations to ensure you will not be drilling any accessories or wires for speakers, CB radios, etc. For instance, we are aware of a popular "wedge" speaker housing for YJ's that mounts behind the seat and will be pierced if not removed while drilling the tub.

Drill the following holes in your tub:

- 3/8" (or a 13/32" clearance drill)
- ▲ 1/2"

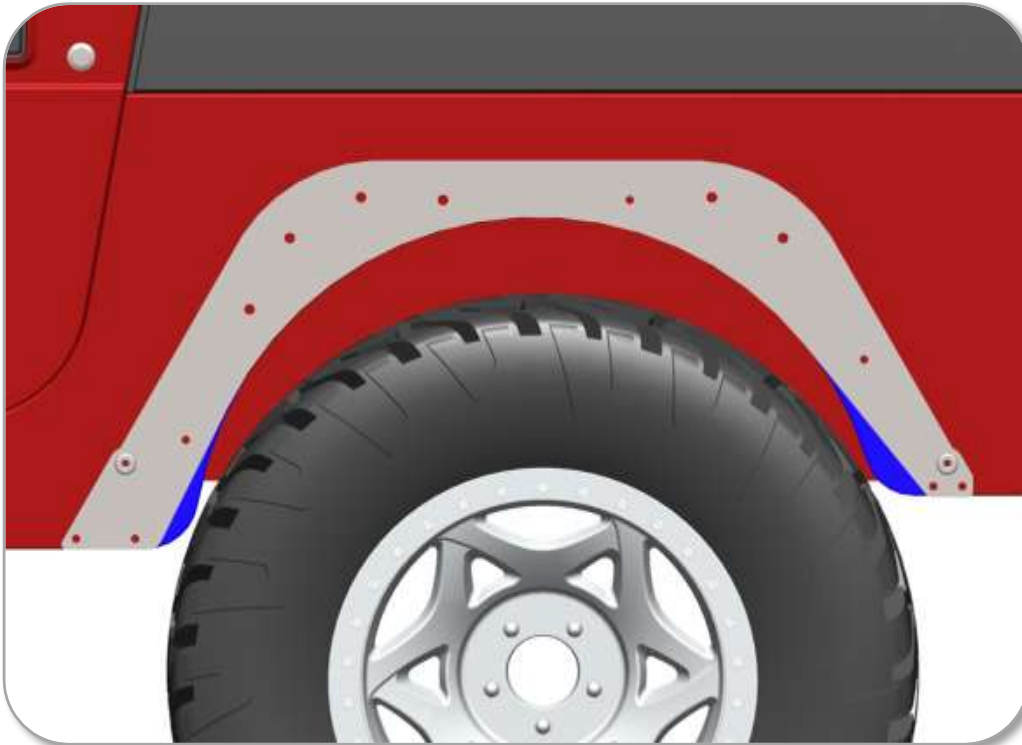


"Stock-Cut" version shown, but hole locations will be the same for "Mod-Cut"

Phase 2: Prepare JEEP for Installation

Step 4: Trim Tub for Mod-Cut Profile

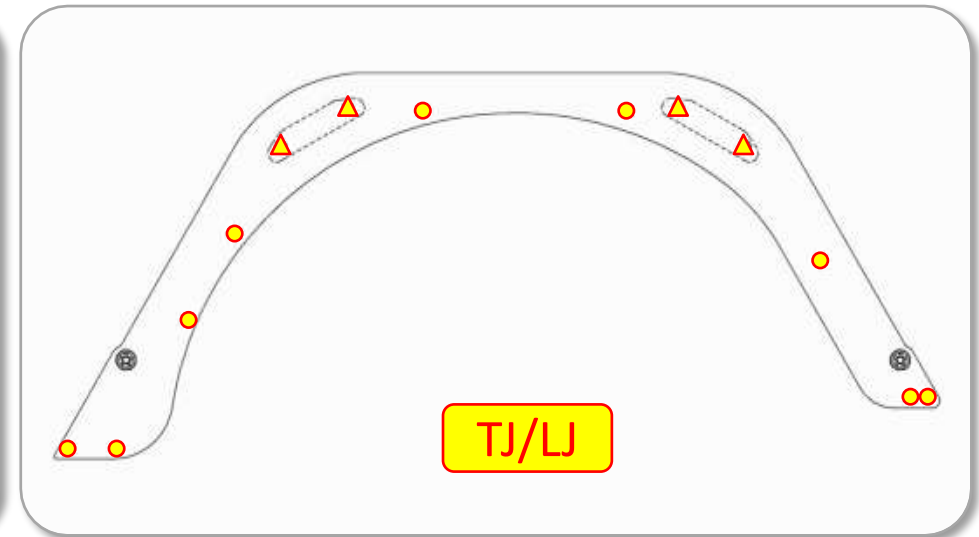
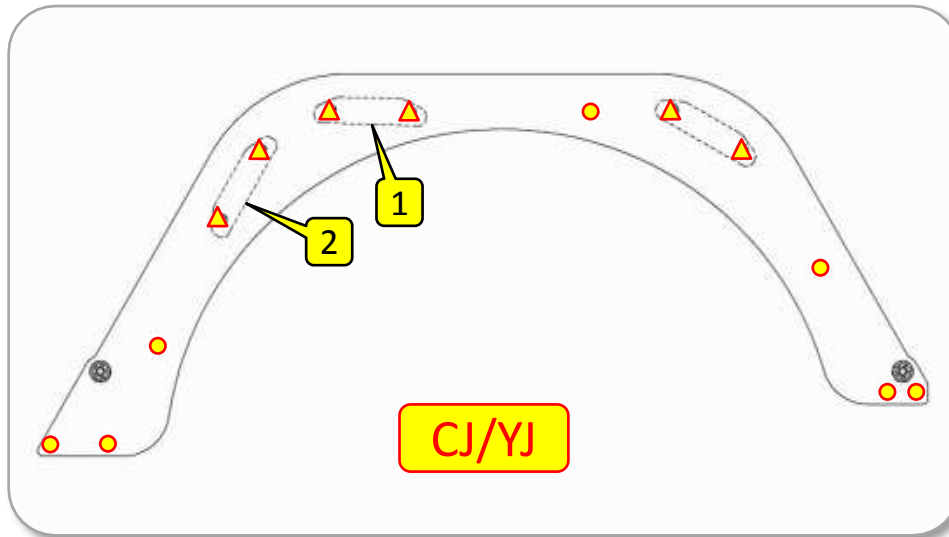
- I. If you ordered the “Mod-Cut” version of the Base Plate you are probably intending to trim the tub. Use your preferred method of trimming (cutting wheel, grinder, torch, plasma, etc.) to remove the marked section, shown in blue below. If you prefer not to cut your tub you can also mask these sections and paint them to match your Base Plates.
- J. If trimming, simply clamp the base plates into place, mark the exposed area with a sharpie, remove the plates and cut off the marked area.
- K. Using the Mod-Cut generally requires removal of your plastic inner fender well. Once removed you can paint the open inner fender with a spray-on bedliner or simply black automotive paint.
- L. After trimming we recommend you paint any exposed metal with primer or a matching body paint. The same applies to the drilled holes, which can be touched up easily by using a ‘Q-tip’ to apply paint to the drilled surface.



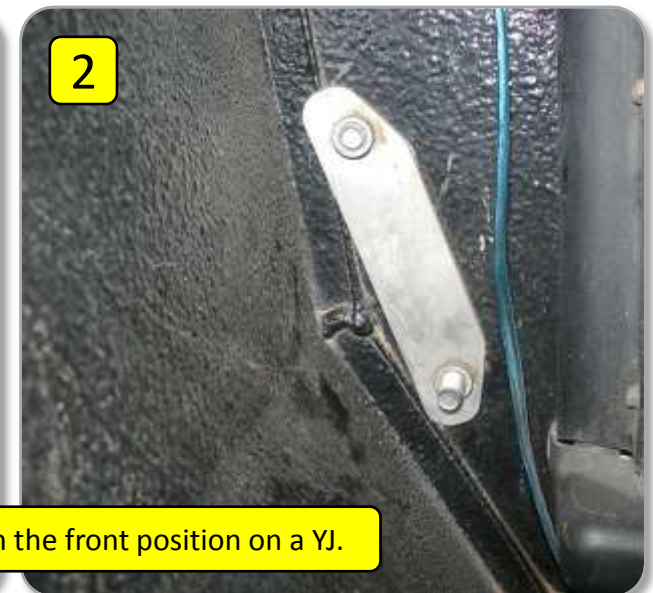
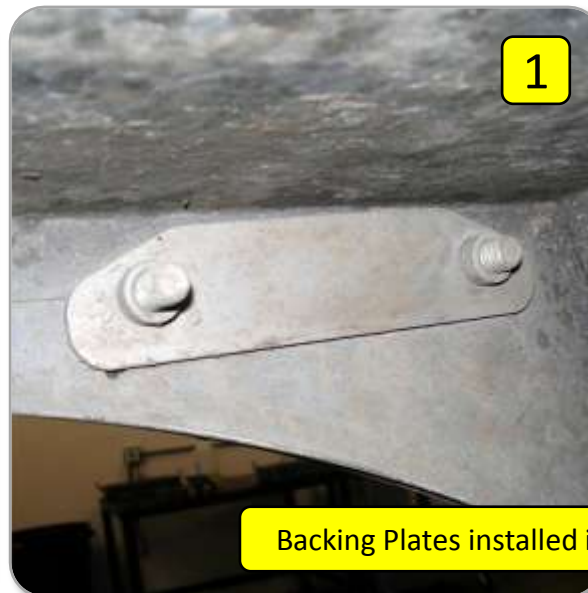
Phase 3: Installation

Step 5: Install Base Plate

- K. In the locations marked with [●], use a 7/32" Allen and 9/16" Wrench to install the provided 3/8"-16 x 1" Button Cap Screws, each backed with a 3/8" Washer and 3/8"-16 Nylock Nut inside the tub. *USE ANTI-SEIZE ON ALL STAINLESS HARDWARE!*



- L. If you are not installing flares, you can install the 3/8"-16 x 1.25" Button Cap Screws in the locations marked with [▲]. In these locations the 3/8" Washer goes on the outside of the Base, and the provided plates go inside the tub.



Backing Plates installed in the front position on a YJ.

Phase 3: Installation

Step 6: Mount Rear Fender Flares

To mount Flares:

- M. Align the flare housing with the 3/8" Button Head Screws so that the screw head and washers are both on the OUTSIDE of the bracket.
- N. Front and Rear Balls will snap into place on the mounting boss. Finger tighten the 3/8" Countersunk Screws through the balls.
- O. Tighten the 3/8" Button Head Screws against the bracket [M].
- P. Tighten the 3/8" Countersunk Screws in each ball [N].



NOTE: the MetalCloak Rear Flares are easily removable to provide you with the maximum clearance during your off-road experience. Simply follow step 5 in reverse to safely remove your flares in minutes.



Clean Up and Enjoy your new MetalCoak Rear Flares!
Questions/Comments? Call us at (916) 631-8071.



Phase 0: Enjoy Your MetalCloak Product!



BITE BACK

Remember to post your pic of your Frame-Built Bumper on your favorite forum and at [Facebook.com/metalcloak](https://www.facebook.com/metalcloak).