



METALCLOAK

INSTALLATION INSTRUCTIONS

PRODUCT: CJ/YJ/TJ/LJ ROCKER RAIL

REV: D | 07-25-2011 | II-2310

**READ INSTRUCTIONS IN FULL BEFORE INSTALLATION.
QUESTIONS? CALL 916-631-8071 M-F 8:00 AM – 5:00 PM PST**

The MetalCloak experience includes the ease of installation of our products. We design for most contingencies, but installation may be different based on different Jeep condition, configuration and/or year.

We are continually trying to improve our products and instructions – please help us by providing feedback and pictures if you find any part of the instructions that do not match your particular Jeep or are not easily understandable.

If you have any difficulties at all, please give us a call. Thank you and enjoy your MetalCloak Products!

IMPORTANT NOTE: We use Stainless Steel Hardware where possible. Therefore, a tube of Silver Anti-seize is provided and should be used on all bolts—only a small amount is needed.

WARRANTY INFORMATION: This article is sold without warranty expressed or implied. No warranty or representation is made as to this products ability to protect the user from injury or death. The user assumes that risk. The effectiveness, warranty and longevity of this equipment are directly related to the manner in which it is INSTALLED, USED and/or MAINTAINED. THE USER ASSUMES ALL RISK. By purchasing this product and opening the packaging, purchasers expressly acknowledge, understand and agree that they take, select and purchase these MetalCloak products from Armored Works, LLC, its affiliates and distributors and agents as is and with all faults. The entire risk as to the quality and performance of these MetalCloak products is with the purchaser. Working on your vehicle can be a dangerous activity. If you are unsure of what you are doing, please leave mechanical or safety critical work to a skilled mechanic. We take no responsibility for the incorrect use and/or installation of MetalCloak products.

Phase 1: Tools & Notes on Installation

Tools Required: This list is the recommended tools for ease of installation. Other versions of the same tool can be used. For example, Allen Wrenches instead of Allen Drive Sockets.



Socket & Ratchet Wrench

7/32" Allen Drive Socket



9/16" Wrench

9/16" Hex Drive Socket



Power or Cordless Drill

1/8" Drill Bit 1/4" Drill Bit
3/8" Drill Bit 17/32" Drill Bit



Surface Sander or Grinder

T25 Torx Screw Driver
Phillips Head Screw Driver



HOW TO USE THIS GUIDE: The installation guide contains ALL steps for installation. Please read and follow the instructions in order of each page top to bottom, and left to right.

Jeep Model: Instructions may apply to multiple Jeep models, but are labeled separately where appropriate (i.e. TJ vs. LJ).

Options: Because of the number of component options we offer, these instructions may contain steps that will not match your particular configuration. You can skip these steps.

Images: Pictures are provided and parts are labeled throughout the instructions. Each text box contains guidance based on the pictures next to it. The text will refer to alphabetical labels (A, B, etc) found in the images.

Installation Notes: Terms may be used in the body of the instructions that you may not be familiar with, if you have any questions feel free to contact us at the number below, or email techhelp@metalcloak.com

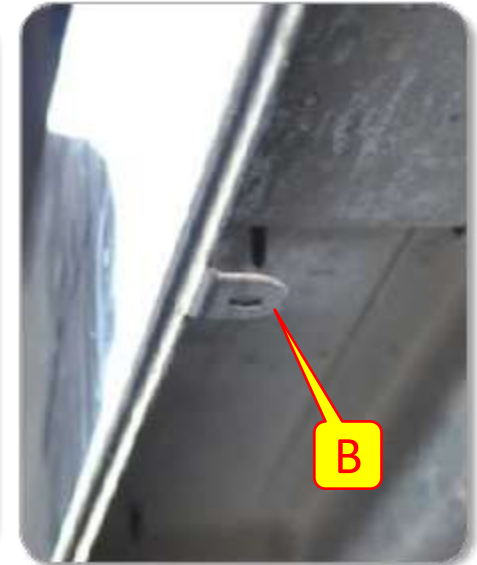
QUESTIONS: Any questions or comments about the instructions? Call us at 916-631-8071 M-F 8:00 AM – 5:00 PM PST.

Phase 2: Prepare Jeep for Installation

Step 1: Remove stock components that will interfere with MetalCloak Rocker Rail installation.

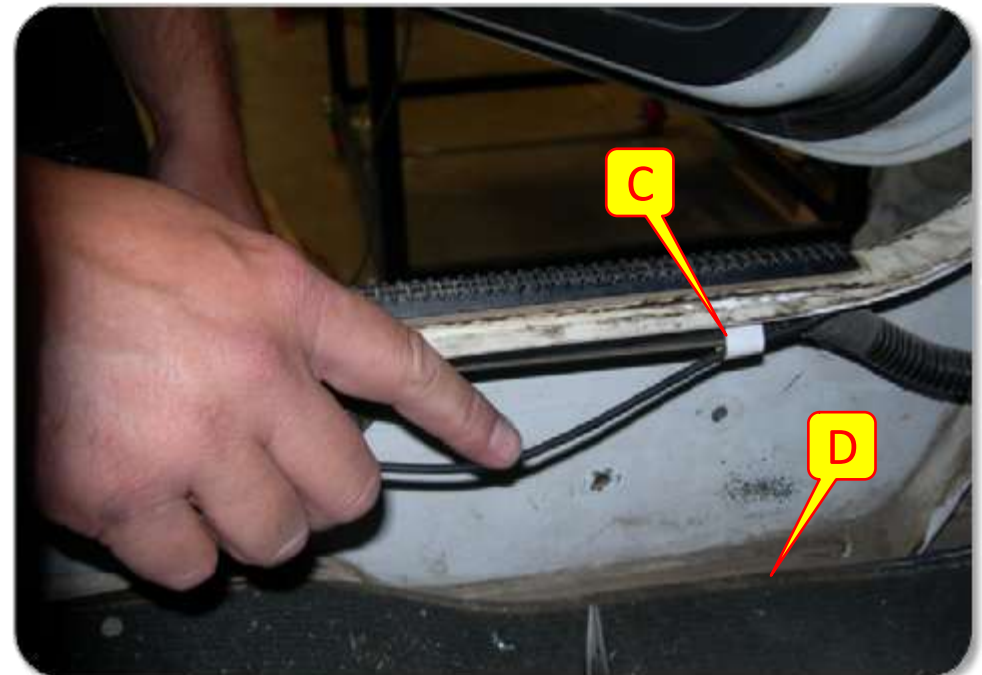


A) Remove any stock or after market rocker guards so the tub sides are clear and clean. If you are installing MetalCloak front Fenders and/or rear Fenders/Corner Guards, install these products first.



IMPORTANT NOTE: THESE STEPS ARE IMPORTANT! Skipping them may create misalignment of the Rocker, or allow the drill to catch your carpet/wiring and cause damage.

- B) On Rubicon edition Wranglers there are stock tabs that need to be either cut or bent so they are flush.
- C) Inside of the door threshold, disconnect the plastic wiring loom cover. This will allow you to hold the wires clear from the tub during drilling.
- D) You may need to fold the carpet back to expose the areas of the side wall where you will be drilling.



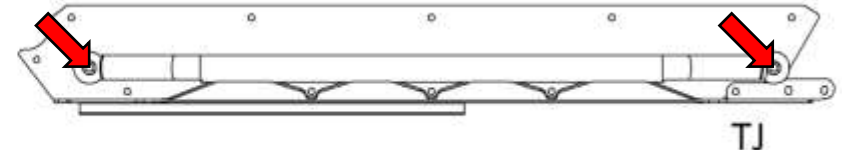
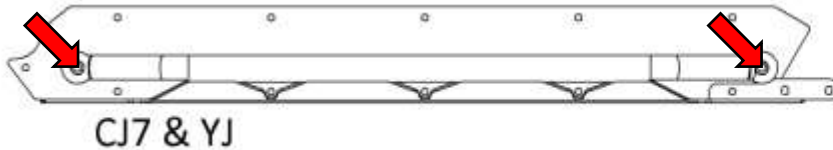
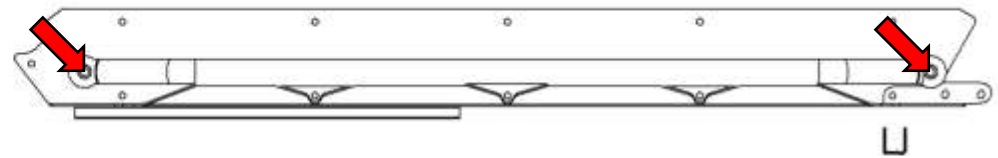
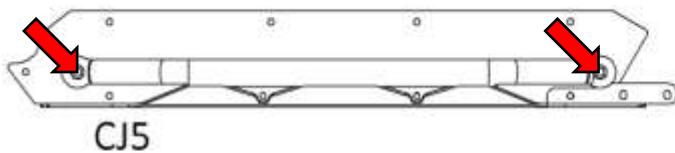
Phase 3: Pre-Installation

Step 2: Install cosmetic Stainless Steel hardware.

IMPORTANT NOTE: THIS STEP MUST BE DONE PRIOR TO INSTALLATION ON THE JEEP! Failure to complete this step at this time will require removing your Rocker Rail to install the hardware.

- E) Install cosmetic Stainless Steel 3/8"-16 x 1" Countersunk Socket Cap Screws in the two ball features on each side (four places total). Screws are backed by a 3/8" Washer and a 3/8" Nylock Nut.

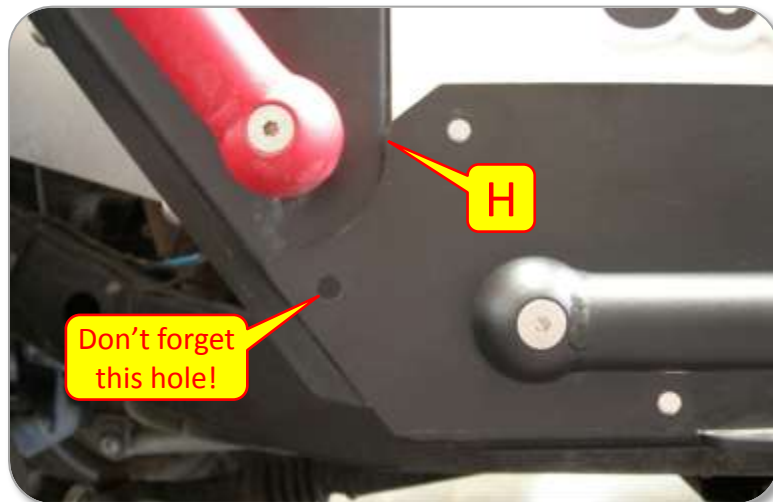
ALL Rocker Rail versions (CJ, YJ, TJ and LJ) have two of these cosmetic features per side [➡].



Phase 3: Pre-Installation

Step 3: Line Up Rocker

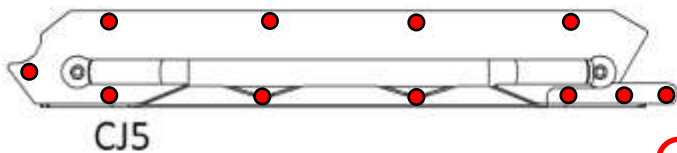
- F) Using a floor jack and wooden block(s), lift the Rocker Rail into place. If your Rocker is powder coated, you may want to use a towel to prevent scratching the coating. Large C-clamps can also be used to clamp the rocker to the Jeep tub (again, use towels or rags to protect the coating).
- G) If you have rear Fenders or Corner Guards, align the holes on the Rocker with those in the rear Baseplate; you will have to remove these two bolts if already installed. When properly aligned the gap in the rear should be fairly consistent, as shown here (after installation) with Extended Corner Guards.
- H) The front corner of the Rocker should be aligned with the front face of the firewall on the Jeep tub.



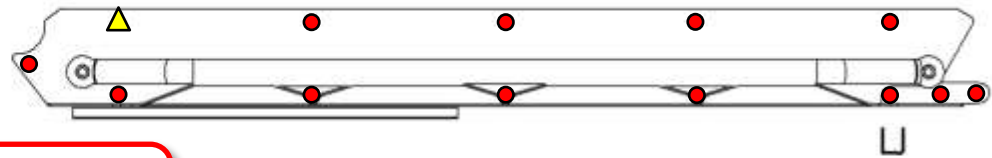
Phase 4: Installation

Step 4: Mark and Drill Holes

- J) If your Rockers are uncoated, you can use them as a drill guide. Use the holes as a guide and drill all holes open to 3/8" [●]. If needed, remove the rockers and drill any holes that require a 3/8" Rivet Nut open to 17/32".
- K) If your Rockers are coated, center-punch all holes and then remove your Rockers prior to drilling. For the best precision, center-drill the holes with a 1/8" drill before drilling with the 3/8" drill. DRILL ALL HOLES TO 3/8" FIRST, then further open the 17/32" holes [▲].
- IMPORTANT NOTE!** Do not drill the Rocker with the 17/32" drill, only drill the tub!



CJ5

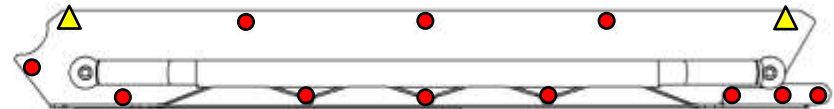


U

- Drill to 3/8"
- ▲ Drill to 17/32"



CJ7 & YJ



TJ

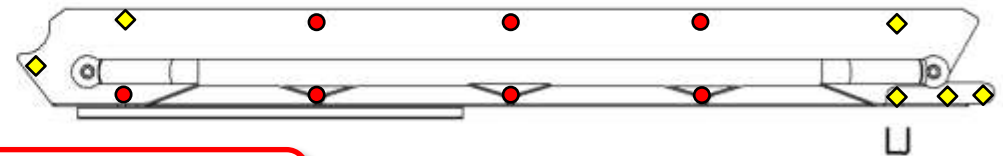
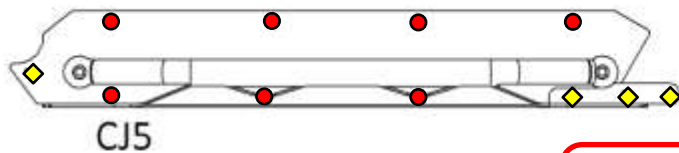
Phase 4: Installation

Step 5: Install Rocker

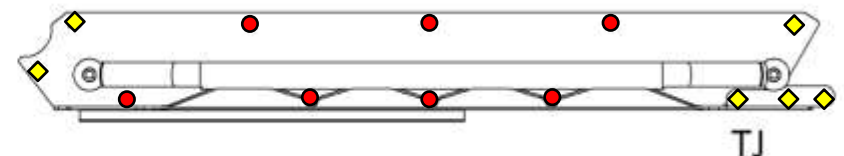
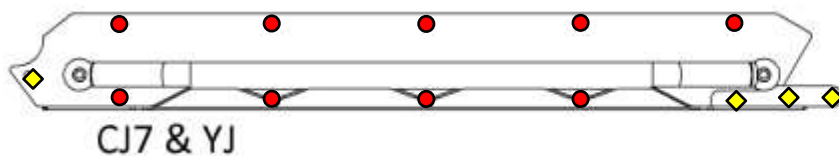
- L) Install 3/8"-16 Rivet Nuts in all 17/32" holes (see our separate Rivet Nut Installation Guide for additional information).
- M) Jack the Rocker back into position.
- N) Use a 7/32" Allen and 9/16" Wrench to install the provided 3/8"-16 Socket Button Cap Screws according to the chart below. All screws not going into a 3/8" Rivet Nut are backed by a 3/8" Washer and a 3/8" Nylock Nut. USE ANTI-SEIZE ON ALL STAINLESS HARDWARE.

ADDITIONAL NOTES: We recommend that you start all hardware before fully tightening anything. Also, masking tape can be helpful to hold the nut in the wrench while starting the threads [O].

Repeat all steps for passenger side; and enjoy!



- 3/8"-16 x 0.75" Socket Button Screw
- ◆ 3/8"-16 x 1.0" Socket Button Screw



Phase 5: Enjoy Your MetalCloak Rocker!



Remember to post your pic of your Frame-Built Bumper on your favorite forum and at [Facebook.com/metalcloak](https://www.facebook.com/metalcloak).

BITE BACK