



METALCLOAK

INSTALLATION INSTRUCTIONS

PRODUCT: SHOCK MOUNT KIT, JK FRONT

REV: A | 11-21-2011 | II-7021

READ INSTRUCTIONS IN FULL BEFORE INSTALLATION.

QUESTIONS? CALL 916-631-8071 M-F 8:00 AM – 5:00 PM PST

The MetalCloak experience includes the ease of installation of our products. We design for most contingencies, but installation may be different based on different Jeep condition, configuration and/or year.

We are continually trying to improve our products and instructions – please help us by providing feedback and pictures if you find any part of the instructions that do not match your particular Jeep or are not easily understandable.

If you have any difficulties at all, please give us a call. Thank you and enjoy your MetalCloak Products!

IMPORTANT NOTE: We use Stainless Steel Hardware where possible. Therefore, a tube of Silver Anti-seize is provided and should be used on all bolts—only a small amount is needed.

WARRANTY INFORMATION: This article is sold without warranty expressed or implied. No warranty or representation is made as to this products ability to protect the user from injury or death. The user assumes that risk. The effectiveness, warranty and longevity of this equipment are directly related to the manner in which it is INSTALLED, USED and/or MAINTAINED. THE USER ASSUMES ALL RISK. By purchasing this product and opening the packaging, purchasers expressly acknowledge, understand and agree that they take, select and purchase these MetalCloak products from Armored Works, LLC, its affiliates and distributors and agents as is and with all faults. The entire risk as to the quality and performance of these MetalCloak products is with the purchaser. Working on your vehicle can be a dangerous activity. If you are unsure of what you are doing, please leave mechanical or safety critical work to a skilled mechanic. We take no responsibility for the incorrect use and/or installation of MetalCloak products.

Section 1: Tools & Notes on Installation

Tools Required: This list is the recommended tools for ease of installation. Other versions of the same tool can be used. For example, Allen Wrenches instead of Allen Drive Sockets.



Socket Ratchet Wrench

10MM Socket or Wrench
16MM (5/8") Socket & Wrench
19MM (3/4") Socket & Wrench



Electric Drill

"L" Drill
9/16" Drill



HOW TO USE THIS GUIDE: The installation guide contains ALL steps for installation. Please read and follow the instructions in order of each page top to bottom, and left to right.

Jeep Model: Instructions may apply to multiple Jeep models, but are labeled separately where appropriate (i.e. TJ vs. LJ).

Options: Because of the number of component options we offer, these instructions may contain steps that will not match your particular configuration. You can skip these steps.

Images: Pictures are provided and parts are labeled throughout the instructions. Each text box contains guidance based on the pictures next to it. The text will refer to alphabetical labels (A, B, etc) found in the images.

Installation Notes: Terms may be used in the body of the instructions that you may not be familiar with, if you have any questions feel free to contact us at the number below, or email techhelp@metalcloak.com

QUESTIONS: Any questions or comments about the instructions? Call us at 916-631-8071 M-F 8:00 AM – 5:00 PM PST.

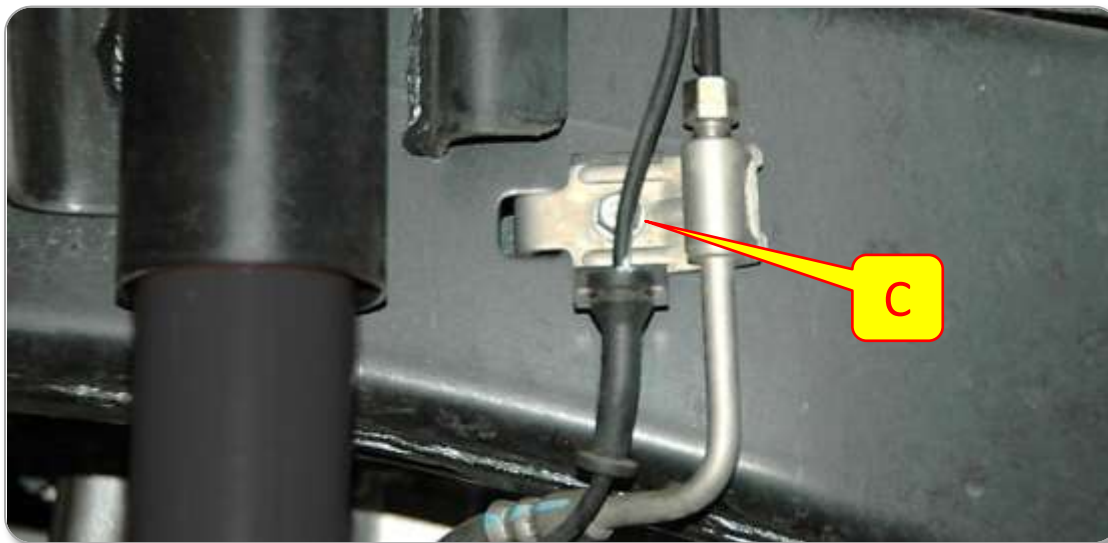
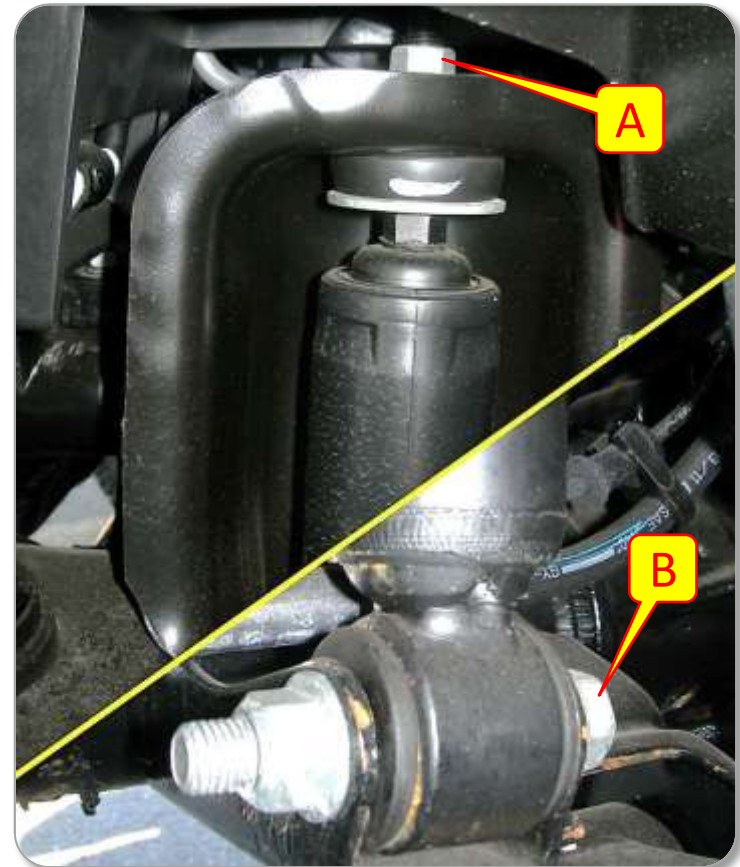
Section 2: Installation Instructions

IMPORTANT NOTE! TO INSTALL LIFT COMPONENTS YOU MAY NEED TO 'DROOP' YOUR SUSPENSION IN THE FRONT AND REAR (THOUGH NOT AT THE SAME TIME). WE STRONGLY RECOMMEND THAT THE VEHICLE BE PLACED ON AN AUTOMOTIVE LIFT AND THAT ALL APPROPRIATE SAFETY PRECAUTIONS BE TAKEN TO SECURE THE VEHICLE WHILE IT IS OFF THE GROUND. FOR SAFETY, ALWAYS USE THE NECESSARY AXLE STANDS (OR EQUIVALENT) TO SUPPORT THE AXLE WHEN THE SUSPENSION COMPONENTS ARE DISCONNECTED, AND TO ENSURE THE INTEGRITY OF YOUR SUSPENSION SYSTEM DURING THE INSTALLATION PROCESS.

Step 1: Remove Stock Components

NOTE: Your JEEP is assembled with metric hardware, and whenever possible it is best to use metric tools to remove or install stock hardware. In those instances where English tools work well, we have included those sizes as an option.

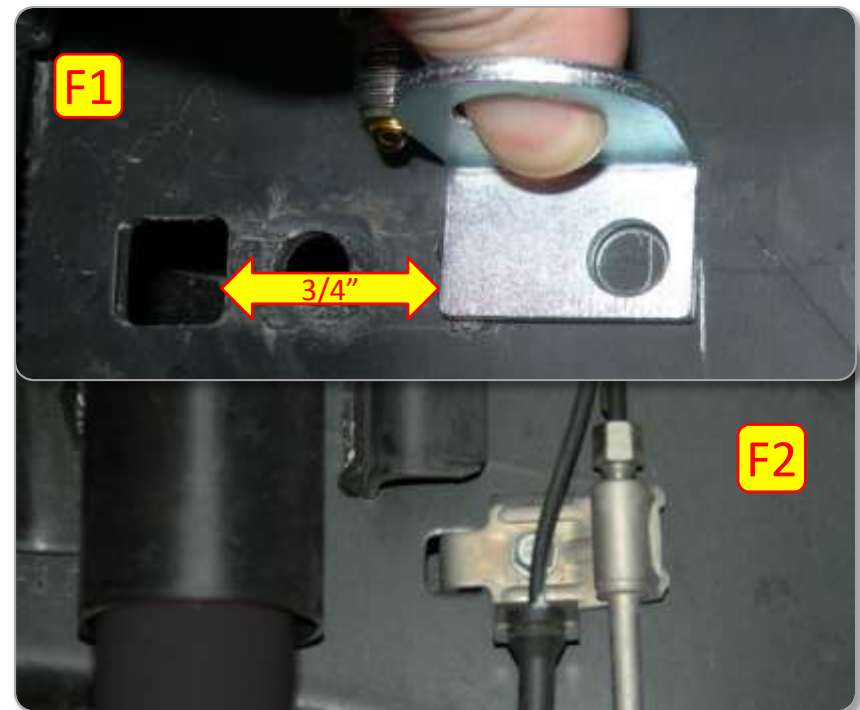
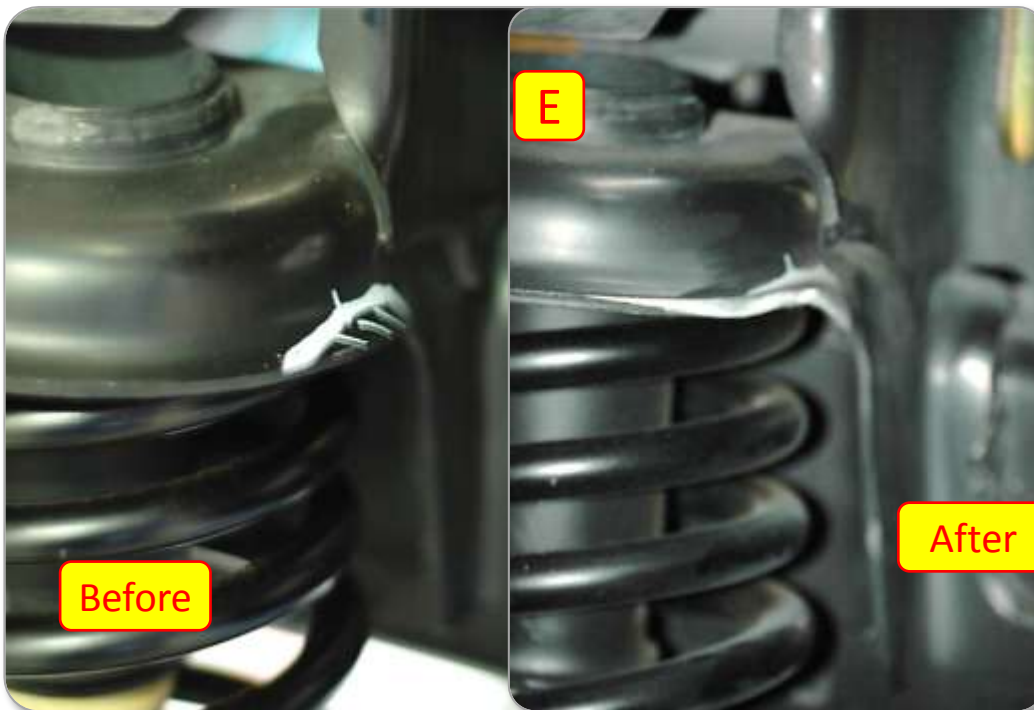
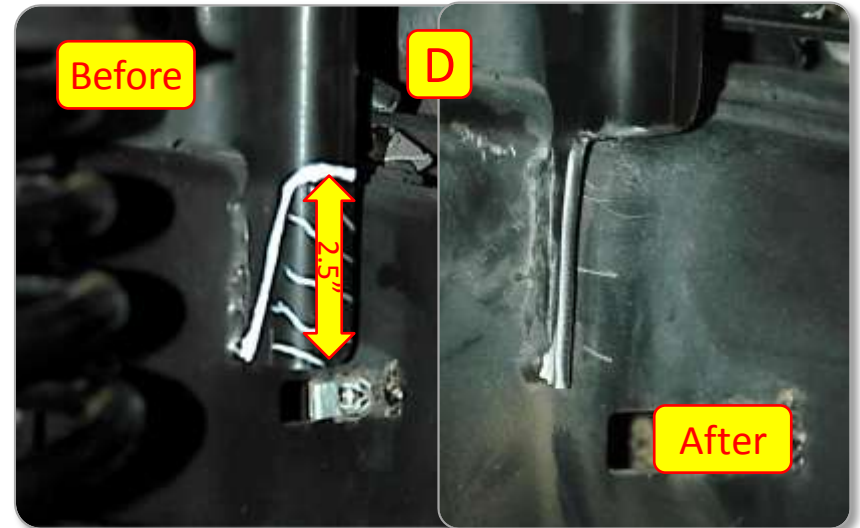
- A. Use a 16MM (5/8") Socket and Wrench to remove the stock nut on top of the upper shock mount tower.
- B. Use a 19MM (3/4") Socket and Wrench to remove the stock nut and bolt from the lower shock mount bracket located on the axle.
- C. Use a 10MM Socket to remove the M6 bolt that holds the brake line bracket. Push the brake line out of the way (to the rear) to make room for trimming the shock mount tower.



Section 2: Installation Instructions

Step 2: Trim Stock Brackets

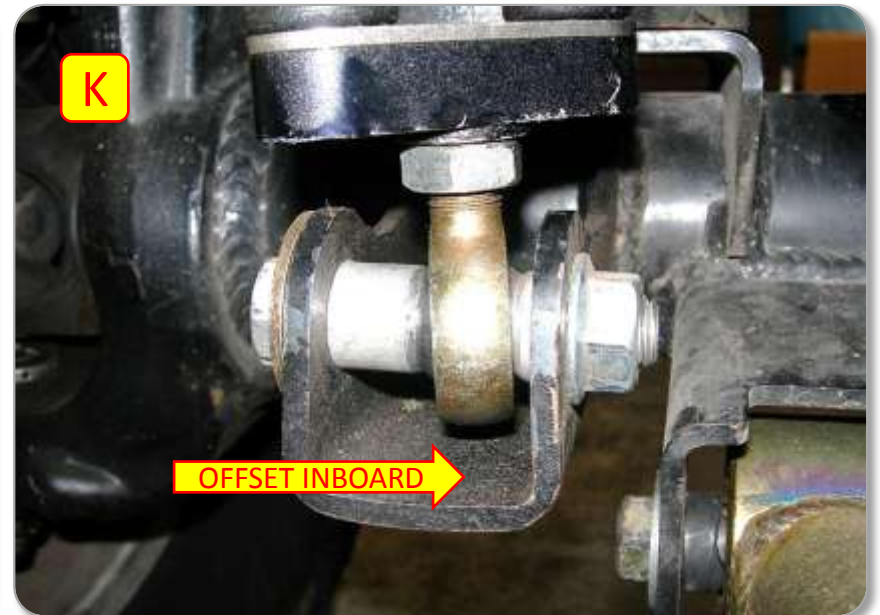
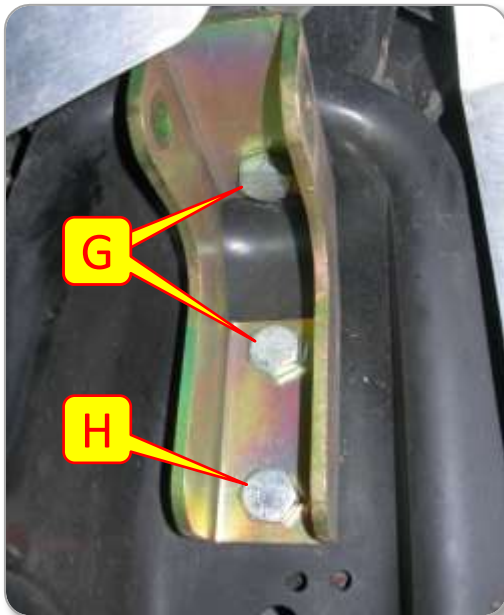
- D. Mark the bottom of the shock mount tower 2.5" from the bottom of the bracket, but do not trim the stock weld.
- E. Also, mark the upper spring bucket to trim. Simply remove the flared "lip" to create additional clearance for the 6-Pak shock.
- F. If you have an "L" style brake line mounting bracket [F1] then you will need to relocate the brake line mounting bracket a minimum 3/4" toward the rear of the vehicle. Use an "L" sized drill to drill a new hole for the provided 5/16" Self-Tapping Screw (an "L" drill is .290"; 9/32" is close in size and should work). On some newer JK models the stock bracket [F2] can simply be re-installed after trimming.



Section 2: Installation Instructions

Step 3: Install Upper Shock Mount Bracket

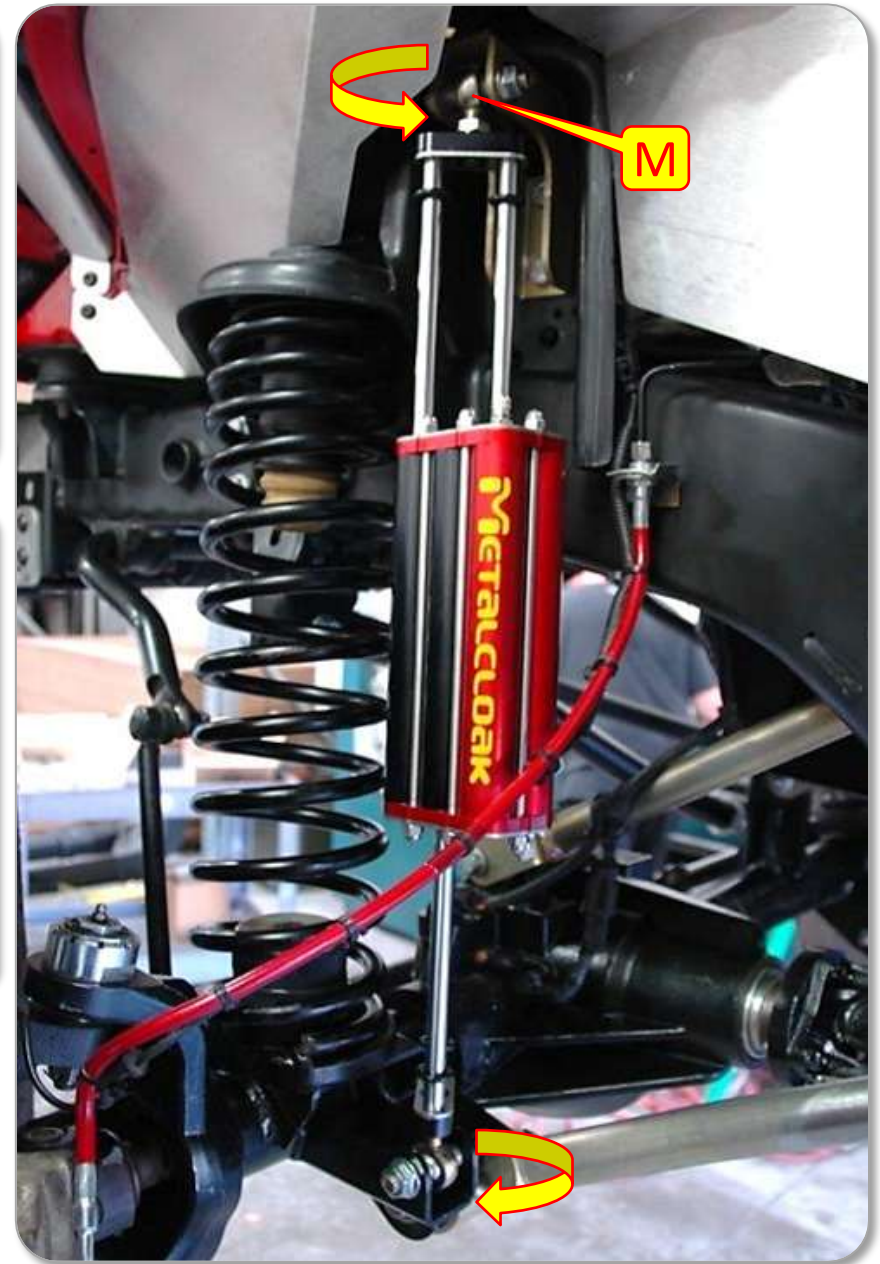
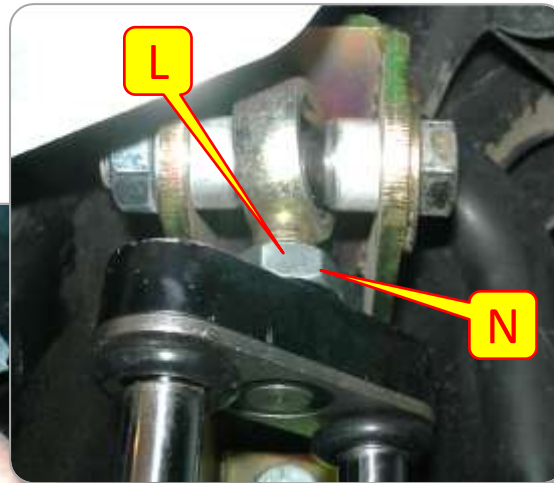
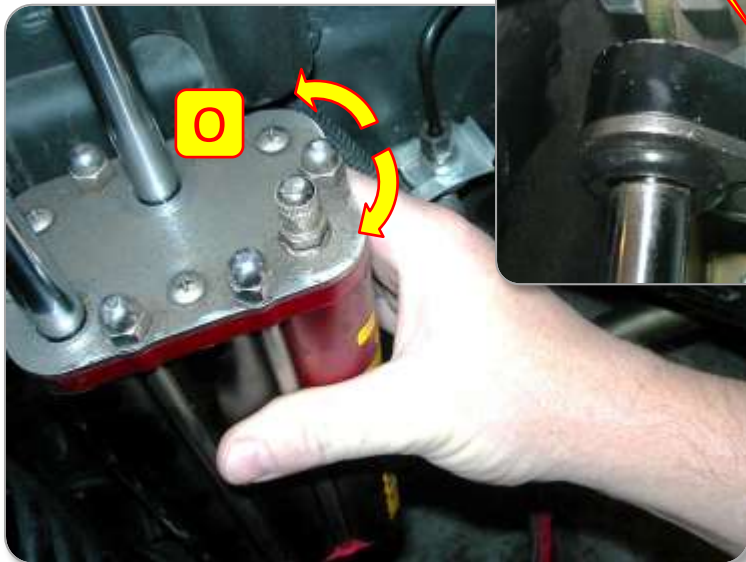
- G. Align the top 2 holes of the Upper Shock Mount Bracket to the stock holes of the shock mount tower. Install the provided 1/2"-13 Hex Cap Screws with a 1/2" Washer under the head, backed by 1/2" Flange Lock Nuts; finger-tighten the hardware.
- H. Center the Bracket in the shock mount tower. Mark the bottom hole, drill a 9/16" hole in this location, and install the third 1/2" Screw in this hole. Fully tighten all 1/2" hardware.
- I. *NOTE: the 6-Pak Shock Reservoir Tubes (RED) should point toward the rear of the vehicle, parallel to the frame of the JEEP.*
- J. Install the upper 6-Pak Shock Rod End using the provided 1/2"-13 x 2.5" Hex Head Screw, Washer, Spacers and Flange Nut.
- K. Install the bottom 6-Pak Shock Rod End into the stock mounting bracket using stock hardware and offset spacers provided.
NOTE: Rod End should be offset INBOARD in stock bracket.



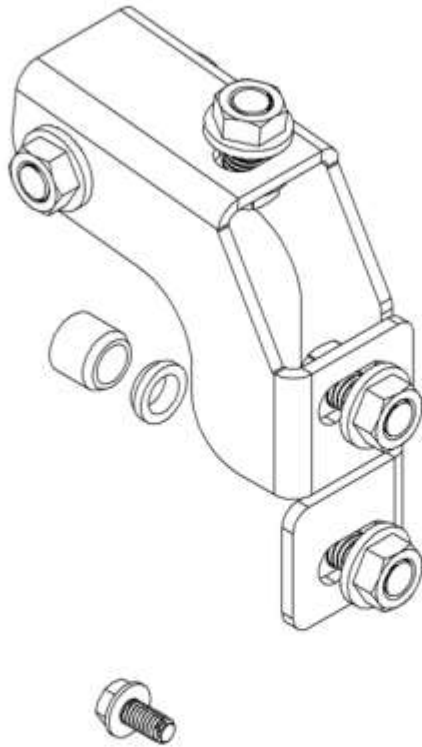
Section 2: Installation Instructions

Step 4: Adjust Rod Ends

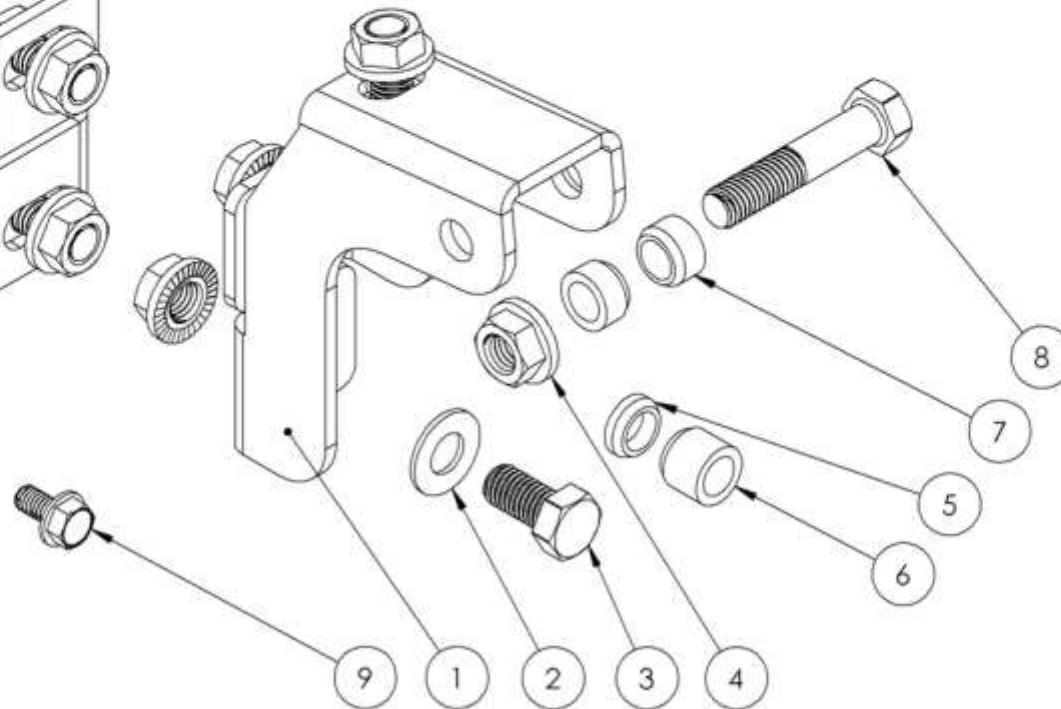
- L. Use a 3/4" Wrench to loosen the 1/2" Jam Nuts on the Rod Ends (one on each end of the shock).
- M. Restrict the rotational position of the shock by semi-binding the Shock Rod Ends against one another. Keep the Shock Body parallel to the frame rail with the Shock Reservoir Tubes (RED) facing toward the rear of the vehicle, turn the Rod Ends in opposite directions as far as they will turn, and then back off the rotation of each Rod End slightly.
- N. Use a 3/4" Wrench to re-tighten the Shock Rod End Jam Nuts.
- O. When properly installed, the reservoirs should only be able to rotate or wiggle side to side less than 1/4" in either direction.



Section 3: Product Components



7021 SHOCK MOUNT KIT, JK FRONT BOM		
ITEM	PART NUMBER/DESCRIPTION	QTY
1	CP-3703 SHOCK MOUNT BRACKET, JK FRONT	2
2	FA-0038 WASHER, .53ID X 1.06OD X .074TH ZNC PLT	8
3	FA-0021 HHCSREW, 0.5-13 x 1L UNC GRD 8 ZINC PLTD	6
4	FA-0065 FLANGE HEX LOCKNUT, 0.5-13 X 1.03FLG ZNC PLTD	8
5	SS-0040-022 SPACER, SHOCK MOUNT .5 ID X .75 OD	2
6	SS-0040-064 SPACER, SHOCK MOUNT .5 ID X .75 OD	2
7	SS-0040-043 SPACER, SHOCK MOUNT .5 ID X .75 OD	4
8	FA-2014 HHCS, .5-13 X 2.5L GR 8 ZINC PLTD	2
9	FA-2036 THRD CUT HEX WASH SCREW, TYPE F .56-18 X .625	2



Enjoy Your MetalCloak Product!



Remember to post your pic of your Cloaked JEEP on your favorite forum and at [Facebook.com/metalcloak](https://www.facebook.com/metalcloak).

BITE BACK