



Installation Instructions



PRODUCT: DB3 Bolt-On Rear CA Correction Bracket

REV: A | 03-01-2017 | II-7197

READ INSTRUCTIONS IN FULL BEFORE INSTALLATION.
QUESTIONS? CALL 916-631-8071 M-F 7:00 AM – 5:00 PM PST

The MetalCloak experience includes the ease of installation of our products. We design for most contingencies, but installation may be different based on different Jeep condition, configuration and/or year.

We are continually trying to improve our products and instructions – please help us by providing feedback and pictures if you find any part of the instructions that do not match your particular Jeep or are not easily understandable.

If you have any difficulties at all, please give us a call. Thank you and enjoy your MetalCloak Products!

IMPORTANT NOTE: We use Stainless Steel Hardware where possible. Therefore, a tube of Silver Anti-seize is provided and should be used on all bolts—only a small amount is needed.

WARRANTY INFORMATION: This article is sold without warranty expressed or implied. No warranty or representation is made as to this products ability to protect the user from injury or death. The user assumes that risk. The effectiveness, warranty and longevity of this equipment are directly related to the manner in which it is INSTALLED, USED and/or MAINTAINED. THE USER ASSUMES ALL RISK. By purchasing this product and opening the packaging, purchasers expressly acknowledge, understand and agree that they take, select and purchase these MetalCloak products from Armored Works, LLC, its affiliates and distributors and agents as is and with all faults. The entire risk as to the quality and performance of these MetalCloak products is with the purchaser. Working on your vehicle can be a dangerous activity. If you are unsure of what you are doing, please leave mechanical or safety critical work to a skilled mechanic. We take no responsibility for the incorrect use and/or installation of MetalCloak products.

Section 1: Tools & Notes on Installation



Tools Required: This list is the recommended tools for ease of installation. Other versions of the same tool can be used. For example, Allen Wrenches instead of Allen Drive Sockets.



Socket & Ratchet Wrench

7/8 Socket/Wrench
3/4 Socket/Wrench
21mm Socket/Wrench



7/8 Socket/Wrench
3/4 Socket/Wrench
21mm Socket/Wrench

9/16" Drill Bit



Drill

HOW TO USE THIS GUIDE: The installation guide contains ALL steps for installation. Please read and follow the instructions in order of each page top to bottom, and left to right.

Jeep Model: Instructions may apply to multiple Jeep models, but are labeled separately where appropriate (i.e. TJ vs. LJ).

Options: Because of the number of component options we offer, these instructions may contain steps that will not match your particular configuration. You can skip these steps.

Images: Pictures are provided and parts are labeled throughout the instructions. Each text box contains guidance based on the pictures next to it. The text will refer to alphabetical labels (A, B, etc.) found in the images.

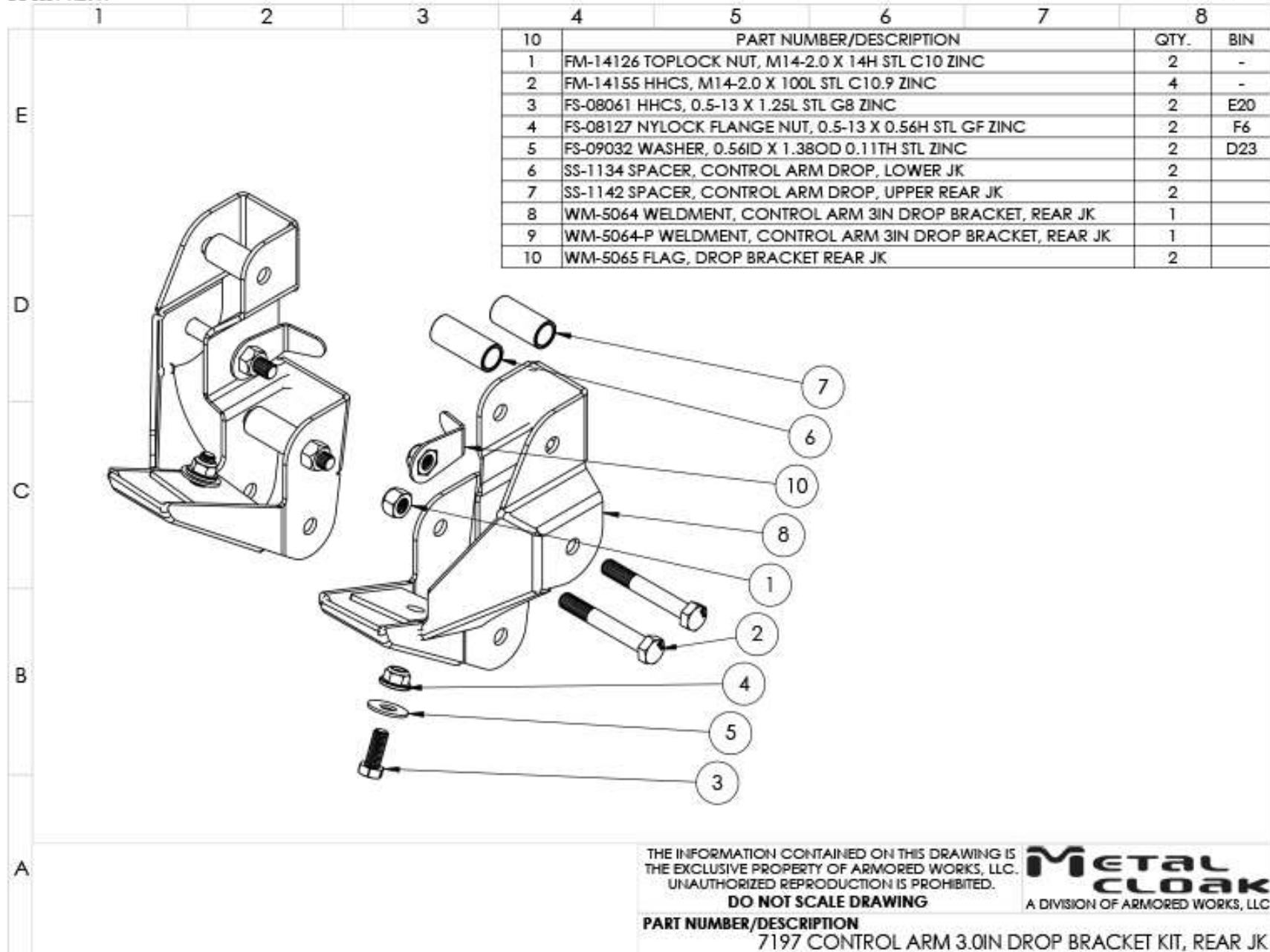
Installation Notes: Terms may be used in the body of the instructions that you may not be familiar with, if you have any questions feel free to contact us at the number below, or email techhelp@metalcloak.com

QUESTIONS: Any questions or comments about the instructions? Call us at 916-631-8071 M-F 7:00 AM – 5:00 PM PST.

Section 2: Product Components

DC-0001 REV A

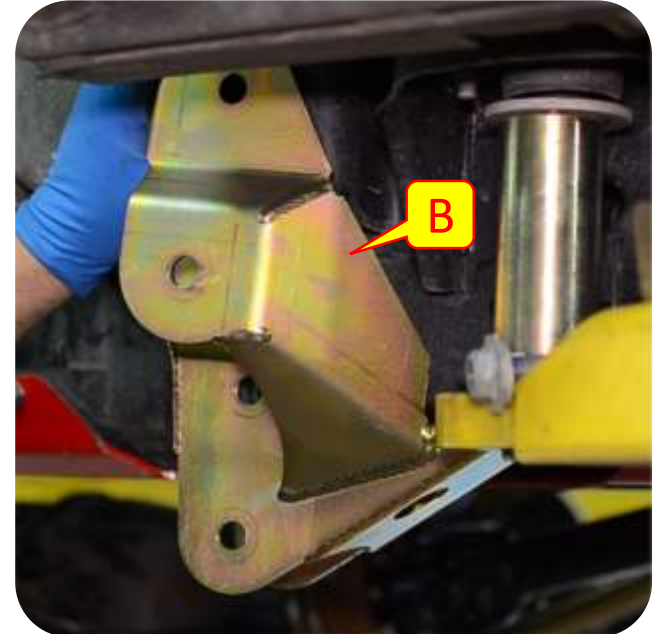
SHEET 1 OF 1



Section 3: Installation Instructions

Step 1: Disconnect Control Arms

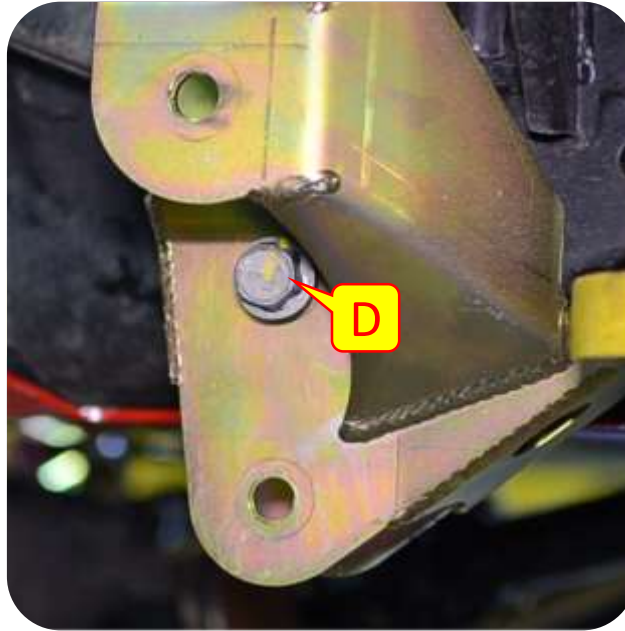
- A. Disconnect the control arms from the frame side using a 21MM socket and wrench. Keep Hardware.
- B. Place bracket up to the frame over the stock control arm bracket and mark hole to get ready for drilling.



Section 3: Installation Instructions

Step 2: Install DB3

- C. Install the spacer and stock hardware in the Stock Upper Rear Control arm bolt hole hand tight.
- D. Install the spacer and stock hardware in the Stock Lower Rear Control arm bolt hole hand tight.
- E. Install the lower skid bolt and washer using the provided hardware.



Section 3: Installation Instructions



Step 2: Install DB3

- F. Using a 9/16" drill bit, drill out the marked hole for clearance for the bolt and flag nut.
- G. Install the rear lower control arm with provided hardware.
- H. Install the Upper Control Arm with provided bolt and flag nut. The MetalCloak rear upper arm should be oriented so that the bend in the arm angles inboard to provide tire clearance.
- I. Tighten all hardware.
 - Stock Hardware – 21mm wrench & socket
 - Hex Hardware – 3/4 (19mm) wrench & socket
 - Skid Hardware – 7/8 (23mm) wrench & socket

